



Solaris Cellular Foundation™

The Future of Health with Nano Technology

INTRODUCTION

The Cellular Foundation base formula has been the subject of several university studies and countless reports from practitioners who contact us with story after story, and we are amazed by the responses they're getting. Over the years, we've collected literally thousands of these reports ranging from impressive to extraordinary.

Methodically formulated to provide a broad range of effects, we believe that Cellular Foundation optimizes cellular functionality, and because cells are the substructure of every tissue in the body, we're accustomed to hearing feedback about improvements in every possible area. After over 14 years of use, Cellular Foundation has repeatedly demonstrated its unrivaled power to support the body's rapid elimination of pathogenic and toxic insults, while also enhancing a number of critical functions, such as circulation, energy, immunity, digestion, and hormonal health, just to name a few.

We realize that this may sound a little too good to be true, but at the end of the day; we know exactly what our products can do. Cellular Foundation is not just another vitamin or herbal supplement. It's a clinical potency, research-driven cellular optimizer that supports every tissue in the body from the ground up, and it's made a difference in the lives of countless people.

Solaris Plant Science products recognize the good cells in and on our bodies and begin working to regenerate and rejuvenate them while breaking down and destroying the debris of every bad cell they come into contact with. Solaris products can detoxify, rebuild, and restore cells back to their original condition while preventing future diseases. It can be used safely externally and internally. Solaris Cellular Foundation assists the body in killing and removing pathogens...a gentle detox action, helping to maintain and restore healthy cells throughout the body. Solaris Cellular Foundation is a LETHAL pathogen killer that leaves little to no background debris, thereby eliminating detoxification or Herxheimer reactions.

WHAT MAKES US DIFFERENT?

Solaris Cellular Foundation formula that targets specific protein groups and promotes restorative biochemistry and is the only product on the market that contains molecules smaller than a nanometer and could be considered "Nano Technology." A central problem in the art of traditional herbalism is figuring out how to optimize herbal synergy. The novice herbalist combines herbs haphazardly, and may produce some positive results, but lacks the ability to harness the true power of multi-herbal

potentiation. The whole is many times greater than the sum of its parts. The seemingly impossible goal: to make 1 + 1 equal 3. Or 5. Or 10. The most advanced herbal practitioners have a keen sense of herb-herb interactions and how one plant will either enhance a desirable property of another, or lessen an undesirable one. A single herb is like a single note. A formula is like a large chord with anywhere from 3 to 15 or more notes. If every note in a chord is played correctly, there is perfect harmony. If even one note is off, there will be dissonance. Therefore, Solaris Cellular Foundation could indeed be considered the perfect herbal composition.

While ancient herbalists used their skills of observation and deduction to the best of their ability to maximize herbal synergy in their formulas, they were unable to peer into the invisible molecular realm, and thus lacked an objective way of measuring the exact contents of their herbs. With the advent of modern instrumentation, nutraceutical companies like Solaris Plant Science can easily analyze the phytonutrient content of each extract.

Solaris Plant Science has developed a proprietary technique to scientifically assess the ability of herbal extracts to maximally enhance one another. The ancient wisdom of synergistic herbal formulation has met the modern method of analytical chemistry. Brushing aside centuries of home remedies and primitive science where harsh and often ineffective chemicals were used for hygiene, sanitation and general clean up, this paper intends to unveil a new and exciting body of knowledge in the fight of cell wall structures.

Nearly 200 years ago two scientists, Matthias Jakob Schleiden and Theodor Schwann first observed that all living tissue is made up of cells. In 1839, Schwann published "*Microscopic Investigations on the Accordance in the Structure and Growth of Plants and Animals.*" His work was the first public statement of cell theory, namely, that cells make up all living things.

Scientists approached the new world of cellular biology with unbridled passion, and they commenced extensive testing on a level that was previously unheard of—all in search of the properties of various chemicals and their effects. Of interest to our immediate discussion is the testing that was done to firmly establish chlorine as a universal sanitizer, a reputation that has survived to this day. Like other chemicals, the scientists of long ago also observed that in addition to its great disease fighting properties, chlorine could be used as a weapon of war.

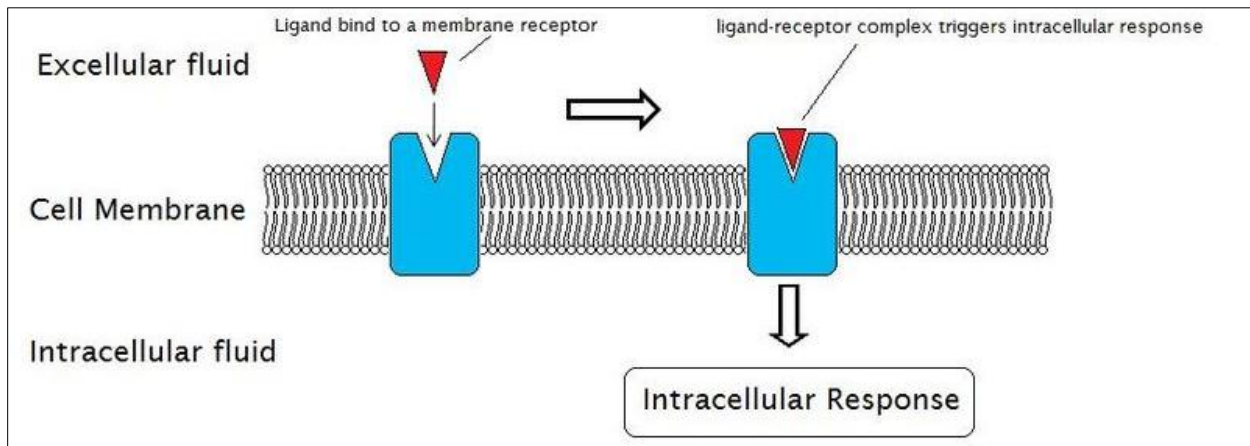
Cellular research continued. We learned about pathogens, specific diseases, viruses, molds, and fungi and discovered more about the relationship of chemistry to cells. The development of chemicals continued to expand and it was not long until science realized that chemicals all too often have a dangerous side effect on humans, plants and animals. Frustrated by the dual nature of many chemicals, confounded by their contrasting bright and seemingly inevitable dark and dangerous side effects, scientists began to long for an enduring, simple fix to these problems.

"There has to be a new substance that we have not found," many reasoned. "There has to be a solution for both the medical and the industrial fields to eliminate once and for all, the pathogenic organisms and bacteria that cause disease, foul odors, hazardous waste and environmental dangers—a new substance with no dark or dangerous side effects and one for which pathogens will not develop resistance."

THE NEW SCIENCE

Scientific investigation affords a new way of looking at the building blocks of life and a new way of thinking about how living organisms are affected by various elements in the environment. There are novel ways of enhancing, controlling and manipulating the building blocks of cells for positive and predictable results and the Solaris Cellular Foundation formula has the ability to manipulate proteins by recognizing basic characteristics of the molecule it comes in contact with.

The Cellular Foundation formula is an antioxidant but It may act like a Ligand, a substance (usually a small molecule) that forms a complex with a biomolecule to serve a biological purpose. In protein-ligand binding, the ligand is usually a signal-triggering molecule, binding to a site on the target protein. Chemists have uncovered many mysteries and cracked codes that were thought to be impossible, giving humanity the ability to unravel the strands of countless proteins in order to stop and in many cases repair the damage done to healthy cells.



Our research team believed that God had given man the answers if we just looked deeper to find them. Looking at the multitude of plant families it was obvious we had to dig deeper. What if there were a plant based product developed using essential oils and esters of plants to create a unique formulation? The earliest, original and naturally occurring keys, protokeys and protocatalysts from plants, allow protein molecules to be unwound, thus allowing other agents to break down the cell wall of the protein molecule and decompose it to its basic elements.

While the keys and catalyts have existed since the dawn of creation, the process whereby these keys became activated is in the ascendancy. What if it were possible to eliminate harmful, caustic and acid-based chemicals from the workplace and the home, and eventually replace them with safe, natural products that are in large part derived from plant derivatives? The next step in restorative biochemistry is to compost and recycle the matter from decomposed toxins.

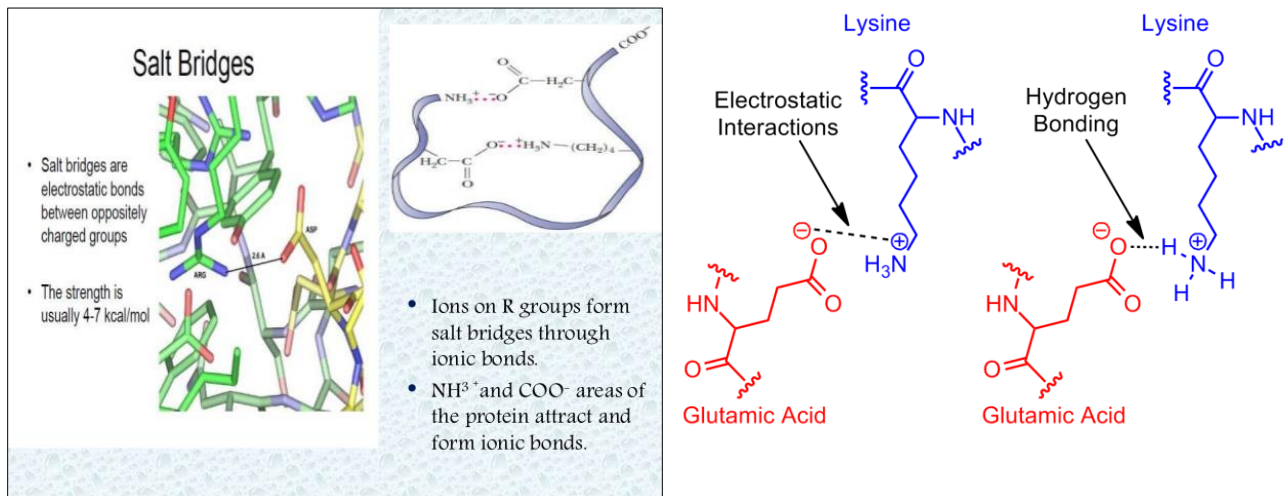
HOW CAN TOXINS BE SAFELY DECOMPOSED?

Diseased cells, pathogens or intoxicated cells often harbor improper proteins due to damaged DNA. Dead, formerly healthy cells in particular have amino acids that contain sulfur which certain bacteria use

as food, producing foul smelling substances known as mercaptans and hydrogen sulfides (H₂S). Proteinaceous waste materials are some of the hardest substances to control as they grow bacteria faster than most other materials. *This is of significant importance considering the fact that hydrogen sulfide is a type of gas that can be released by SIBO (small intestinal bacterial overgrowth).* These target cells have salt markers or a salt bridge on their surface. A salt bridge is an underutilized Achilles heel on all pathological and pathogenic cells.

Imagine if a biochemical “early warning system” existed which would recognize salt bridges in dangerous cells and selectively uncloak or unravel those bad players allowing the body’s native immune function to decompose them selectively and recycle the elements within for a healthier use?

Imagine if a biochemical “early warning system” existed which reacts with the unhealthy proteins and prevents harm to healthy cells by recognizing the salt base marker or salt bridge within that protein (*salt bridges in proteins are bonds between oppositely charged residues or functional groups that are sufficiently close to each other (side chains) to experience electrostatic attraction or forces of attraction between positively charged nuclei and negatively charged shared electrons, thereby effectively maintaining charge balance. They contribute to protein structure and stability and to the specificity of interaction of proteins with other biomolecules, but in doing so they need not necessarily increase a protein's free energy of unfolding).*



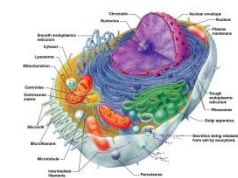
Simply put... the Cellular Foundation formula is a plant based product that targets specific protein groups. It looks at the *salt bridge* or *polar charge* to determine if it needs to either reinforce and strengthen the cell structure or destabilize and destroy the cell wall.

UNDERSTANDING THE ROLE OF SALT AS A BONDING AGENT IN PROTEINS

Cells use proteins as nutrient transport systems to import food, vitamins, minerals and oxygen into the cell and export carbon dioxide and wastes out of the cellular processes. For example, stable protein structure is necessary for Phase 3 detoxification which occurs primarily in the cell membrane which contains efflux transporters or efflux pumps (transport proteins). According to Dr Christopher Shade, an expert in the environmental and analytical chemistries of mercury, Phase III transporters are present in

many tissues such as the liver, intestine, kidneys, and brain where they can provide protection or a barrier against xenobiotic entry, or a mechanism for actively moving xenobiotics and endobiotics in and out of cells.

Mammals, fish and reptiles use similar processes to create and use energy from food, while processing ions and oxygen for use in cellular respiration and replication. Plants have similar nutrient transport systems, with some differences in respiration systems that work together for the health of the plant. In contrast to these processes are systems that work only for themselves, such as single cell organisms. Some of these bacteria, yeasts, and molds use different chemical processes for respiration and have different cellular structures. Such opportunistic organisms use waste products and other sources of food to live. They often have different cellular structures and different cell walls.



Unhealthy cells and certain pathogenic bacteria normally have one thing in common: extraneous proteins. Imagine being able to notice and target these extraneous proteins because of the all-important salt bridge. A salt bridge is a vital component to the cell, and the cell won't function without it. If the cell does not have a salt bridge it will break the bonds of the amino acids making up the proteins that hold it together and if it does have a salt bridge (healthy cells), it will strengthen the proteins that cell wall consists of improving the health of that cell.

MELTING PROTEINS

How might a targeted bioactive agent melt proteins? Melt is actually a poor choice of words because we don't melt it, we break down its cell structure, but "melt" is the simplest form in which to explain and for people to easily grasp what happens. Proteins are very long chain molecules, so long that they only behave as solids when they are dissolved in water or bodily fluids—and accordingly they must be decreased in chain length to dissolve the proteins completely. Proteins are often structural, providing the glue that holds things together.

Breaking this glue when it does not dissolve is a job that scientists previously thought could only be done by enzymes. For instance, removing a bloodstain from clothing requires a detergent with enzymes that will break down the proteins in the congealed blood—because again, it cannot dissolve without first breaking down. The world needs formulations that are unique in their ability to behave like enzymes and carry out the protein melting process.

"Melting proteins" again, is a figure of speech, as technically proteins do not melt per se, but simply the bond holding it together (the cell wall) degrades to the point that it is no longer the cell it was. Proteins must be lysed "chemically modified" and adhesions broken in order "open" the protein to be degraded.

What does it mean to "open" the protein molecule? Protein molecules are often bound together with linking pairs of amino acids and immobile sulfur bonds which, when broken, render them reactive so that other enzymes can break down the amino acids that are no longer linked. *In other words it weakens protein bonds in organisms and when a molecular bond weakens the structure collapses and the affected organism or substance is changed.*

This also allows for the catalytic break down of proteins like an enzyme, with in situ reactant matrices that encourage regeneration of the healthy cells and breakup the amino acid chain of unhealthy cells all by recognizing this marker.

Although the Cellular Foundation formula does break down proteins - it is NOT an enzyme and differs as follows:

- ▶ Less sensitive to temperature
- ▶ Attacks only non-salt based proteins

Using this mechanism, we would expect that all pathogens would be decomposed and recycled using this mechanism. This revolutionizes the future of health and healing!

CONCLUSION

Solaris Cellular Foundation has a long chain molecule that is suitable for complex salt situations and therefore not harmful to higher life forms. Cellular Foundation may act like a Ligand to be transported in the organism in some situations but is also a good antioxidant to remove free radicals and serve many other functions. By not causing a disruption of the cell function in complex proteins Solaris Cellular Foundation is effective and selective in its nature of dealing with proteins.

Solaris Cellular Foundation is an extensive protocol formula discovery in biochemistry that promotes and encourages the restoration and repair of unhealthy or damaged cells. **The Solaris Cellular Foundation also breaks down organic solids.**



Solaris Cellular Foundation uses a proprietary solution to blend certain plant oils and esters that could not be blended until now.

Solaris Cellular Foundation is a non-toxic, 100% plant-based liquid, no additives or preservatives...ever.

Solaris Cellular Foundation kills and instantly stops reproduction of bacteria, fungus and virus.

Solaris Cellular Foundation promotes healing and preserves tissue.

Solaris Cellular Foundation is unique (a remarkable scientific discovery).

This unique mechanism enables Solaris Cellular Foundation to function as a powerful disinfectant and a healing agent at the same time. Testing confirms that Solaris Cellular Foundation™ is a LETHAL pathogen killer that leaves no background debris which means no detox reaction.